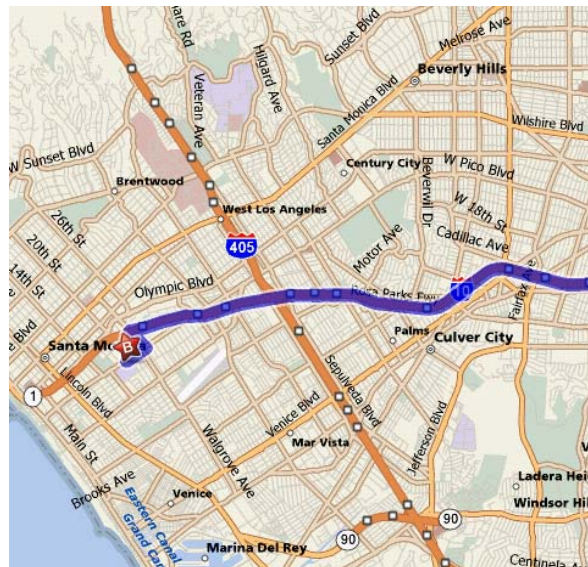


Directions to Santa Monica College

Take the 10 freeway to Cloverfield Ave. which is approximately midway between the 405 freeway and the coast. Exit at Cloverfield and turn south. Travel approximately 0.2 mile on Cloverfield and turn right on Pico Blvd. Continue on Pico approximately 0.3 mile to 20th Street and turn left. After one long block, turn right on Pearl Street and park in Lot 5 immediately to your left.

From the parking lot, walk west on Pearl Street and follow the signs to the Math Complex (MC) Building where conference check-in will take place.

For a campus map, logon to <http://www.smc.edu/apps/pub.asp?Q=1479> and select "Main Campus 2 Dimensional".



"It seems quite unrealistic to judge a curriculum by its general outline, or to judge a course by its syllabus. We can 'cover' very impressive material, if we are willing to turn the student into a spectator. But if you cast the student in a passive role, then saying that he has 'studied' your course may mean no more than saying of a cat that he has looked at a king. Mathematics is something that one does."

*Edwin E. Moise,
American mathematician,
quoted in
Out of the Mouths of Mathematicians
by Rosemary Schmalz*

CMC³ - South Fall Mini-Conference



September 27, 2008
Santa Monica College

CMC³-S Fall 2008 Mini-Conference Program

Morning Conference Schedule

08:00am-08:30am: Registration

Come early and join your colleagues for refreshments before we begin the day's activities.

08:45am-10:15am: Session 1

1A) BSI (Basic Skills Initiative) 101

Who are Basic Skills students? How well are we addressing their needs? What are the key components in effective developmental mathematics pedagogy?

1B) UCLA's SOCR isn't a Sport!

SOCR, the Statistics Online Computational Resource, provides portable online aids for probability and statistics education. Learn how to make SOCR work for you.

10:30am-12:00pm: Session 2

2A) Effective Practices in Mathematics

Take advantage of learning research to increase your students' success by implementing some new strategies in your classroom.

2B) Teach & Meet Online via CCCConfer!

Funded by a grant from the Chancellor's Office, CCCConfer provides free online and phone communication/collaboration for faculty, staff and students at California Community Colleges. Learn how to take advantage of this excellent resource for teaching math! P.S. bring your cell phone!

2)The Statistics Online Computational Resource (SOCR)...

Afternoon Conference Schedule

12:00pm-01:00pm: Lunch

01:00pm-02:30pm: Session 3

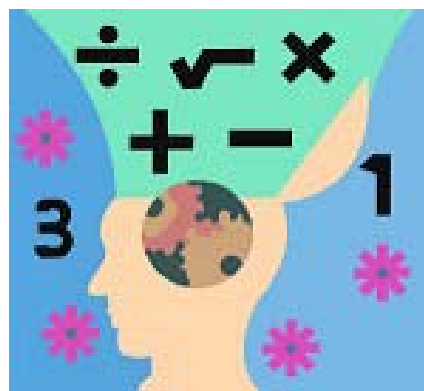
3A) Rubrics and Assessment

How do your students know what you want? How do you know if your students "get it"? Learn how to build a rubric that reflects your expectations and the difference between assessing and evaluating your students.

3B) Guided Tour of MAA's MathDL

Created and maintained by the Mathematical Association of America, MathDL, the Mathematical Sciences Digital Library, provides exemplary online resources for mathematics education and research. Come check it out!

02:40pm-03:00pm: Closing & Door Prizes



CMC³-S Fall Mini-Conference

Saturday, September 27, 2008

Santa Monica College

Registration Form (Please Print)

Name		
College		
Mailing Addr		
City State ZIP		
email		
Please check if new <input type="checkbox"/> mailing address <input type="checkbox"/> email		
Payment	Member (\$20/\$25 on site)	
	Non-Member (\$25/\$30 on site)	
	Additional Late Fee (\$5 if postmarked after 9/20)	
	Total enclosed	

Please use a separate form for each registrant. A limited number of lunches will be ordered for late and on-site registrants but registering late or on-site does not guarantee lunch!

Registration Process

- Fill out this form.
- Make check payable to "CMC³-South".
- Mail the form, together with your check, postmarked by 9/20/2008 to:
 CMC³-S Mini Conference
 c/o Mathematics Department
 Santa Monica College
 1900 Pico Blvd
 Santa Monica, CA 90405
- If your reservation is postmarked after 9/20, include additional \$5 late charge.